

**KEY**

- S278 BOUNDARY
- EXISTING HIGHWAY BOUNDARY
- EXISTING KERBS TO BE RETAINED (OR REPLACED IF DAMAGED, TO BE AGREED WITH LCC HIGHWAYS INSPECTOR)
- GRANITE FLUSH KERB 200mm WIDE (0-6mm)
- GRANITE FLUSH KERB TO RAISED TABLE 200mm WIDE
- TRANSITION KERB
- GRANITE UPSTAND KERB
- FLUSH BRASS STUDS TO DEMARCATATE HIGHWAY 1m SPACING, LAID CENTRAL TO BOUNDARY
- GRANITE SETT FOOTWAY CONSTRUCTION
- GRANITE SETT CARRIAGEWAY CONSTRUCTION

**GENERAL NOTES:**

- THIS DRAWING IS TO BE READ IN CONJUNCTION WITH ALL RELEVANT ARCHITECTS AND ENGINEERS DRAWINGS AND SPECIFICATIONS.
- DO NOT SCALE THIS DRAWING. ANY AMBIGUITIES, OMISSIONS OR ERRORS ON DRAWINGS SHALL BE BROUGHT TO THE ENGINEERS ATTENTION IMMEDIATELY. ALL DIMENSIONS MUST BE CHECKED / VERIFIED ON SITE.
- ALL DIMENSIONS ARE IN METRES UNLESS NOTED OTHERWISE.
- FOR GENERAL NOTES REFER TO DRAWING.
- 6mm JOINTS AND ULTRASCAPE MORTAR AS AGREED WITH ASSET MANAGEMENT

**IN ADDITION TO THE RASWA S171 LICENSE, THE CONTRACTOR MUST CONTACT THE HIGHWAYS SUPERVISOR ON 0113 3787378 AT THE FOLLOWING STAGES OF THE HIGHWAY WORKS:**

- AT LEAST TEN WORKING DAYS PRIOR TO THE START DATE;
- AT LEAST TWO CLEAR DAYS IN ADVANCE OF EXPOSURE OF FORMATION LEVEL;
- ON DISCOVER OF ANY UNFORESEEN CIRCUMSTANCES OR STATUTORY UNDERTAKERS EQUIPMENT;
- ON COMPLETION, FAILURE TO DO SO PUTS THE DEVELOPER AT RISK OF HAVING TO RETRACT THE WORKS AND RECONSTRUCT TO HIGHWAYS APPROVAL.

**POINT DATA**

POINT NUMBER	EASTING	NORTHING	LEVEL (m AOD)
1	430331.215	433052.230	26.202
2	430333.711	433052.410	26.383
3	430333.756	433047.238	26.366
4	430331.229	433047.228	26.198
5	430359.714	433046.274	26.366
6	430357.319	433046.176	26.416
7	430357.210	433051.936	26.515
8	430359.611	433052.003	26.411
9	430341.110	433061.715	26.470
10	430342.271	433060.009	26.590
11	430338.280	433057.563	26.532
12	430337.188	433059.473	26.482
13	430339.334	433055.818	26.525
14	430339.560	433054.945	26.516
15	430339.172	433054.368	26.503
16	430337.293	433053.131	26.431
17	430336.853	433052.857	26.424
18	430336.171	433052.664	26.410
19	430340.009	433047.414	26.560
20	430349.919	433045.847	26.464
21	430349.896	433051.748	26.650
22	430347.913	433052.197	26.683
23	430346.450	433053.546	26.690

Rev.	Description:	Date:	By:	Chkd:
P08	ADDED NOTE TO LOADING BAY	08/09/23	AJR	OT
P07	UPDATED FOLLOWING LCC MEETING 23/08/23	25/08/23	OT	OT
P06	AMENDED TO LCC COMMENTS	18/08/23	AJR	OT
P05	S278 ADOPTION BOUNDARY AMENDED	19/07/23	AJR	OT
P04	REVISED FOLLOWING LCC MEETING	27/03/23	OT	OT
P03	REVISED TO LCC EXTENTS	24/02/23	OT	OT
P02	REVISED TO LCC COMMENTS	16/08/22	OT	OT
P01	FIRST ISSUE	26/05/22	AJR	OT

**Curtins**

Rose Wharf Ground Floor 78-80 East Street Leeds LS9 8EE  
 0113 274 800  
 leeds@curtins.com  
 www.curtins.com

Civil & Structural - Transport Planning - Environmental - Infrastructure - Geotechnical - Conservation & Heritage - Principal Designer  
 Birmingham - Bristol - Cambridge - Cardiff - Douglas - Dublin - Edinburgh - Glasgow - Kendal - Leeds - Liverpool - London - Manchester - Nottingham

SUITABLE FOR INFORMATION **S2**

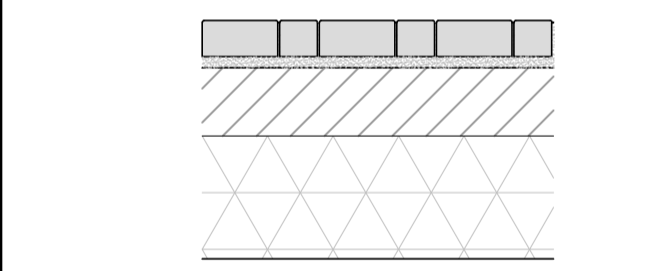
Project: **FORMER TETLEY BREWERY - LEEDS**

Dig Title: **PARK ENTRANCE S278 LAYOUT**

Drawn By	Designed By	Checked By
AJR	OT	OT
Date	27/05/22	Scales @ A1
		1:100

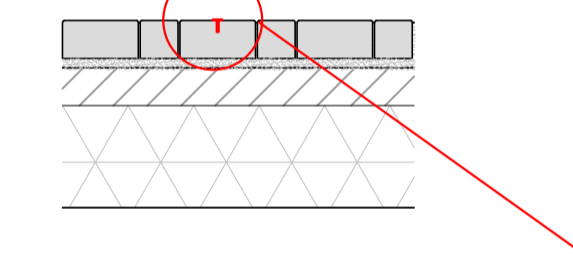
Project No - Originator - Function - Spatial - Form - Discipline - Number	Revision
LDS - CUR - SW - CIV - ZZ - DR - 95002	P08

95mm MIN GRAINTE SETTS WITH SLURRY MORTARED JOINTS 6mm WIDE (SEE NOTE 5)  
 30mm LAYING COURSE FINE BEDDING MORTAR WITH PRIMING MORTAR USED ON BLOCK AS PART OF LAYING PROCESS  
 180mm PAVEMENT QUALITY CONCRETE (PQC) C32/40 (OR EQUIVALENT ACCEPTED DEPTH OF DENSE AC)  
 325mm TYPE 1 SUB-BASE  
 TERRAM 1000 GEOTEXTILE  
 COMPACTED SUBGRADE (NON-FROST SUSCEPTIBLE)



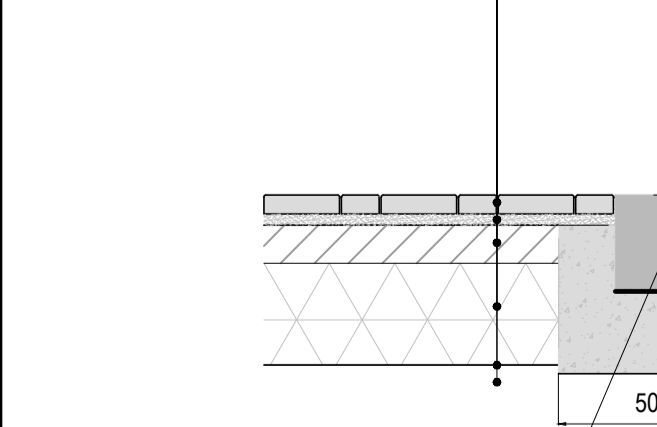
**GRANITE SETT CARRIAGEWAY**  
 RAISED TABLE  
 SCALE 1:20

100mm (MIN) SETTS (TO LANDSCAPE ARCHITECTS SPECIFICATION)  
 30mm TYPE A MORTAR TO BS7533 (ULTRASCAPE)  
 100mm BASE COURSE AC 32 HDM BASE 40/60  
 270mm TYPE 1 SUB-BASE  
 TERRAM 1000 GEOTEXTILE (OR SIMILAR APPROVED)



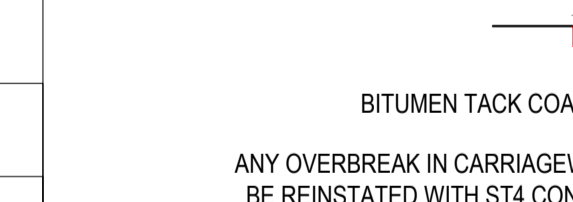
**GRANITE SETT FOOTWAY TO PARK ENTRANCE**  
 SCALE 1:20

95mm MIN GRAINTE SETTS WITH SLURRY MORTARED JOINTS 6mm WIDE (SEE NOTE 5)  
 30mm LAYING COURSE FINE BEDDING MORTAR WITH PRIMING MORTAR USED ON BLOCK AS PART OF LAYING PROCESS  
 180mm (Min) PAVEMENT QUALITY CONCRETE (PQC) C32/40 (OR EQUIVALENT ACCEPTED DEPTH OF DENSE AC)  
 325mm TYPE 1 SUB-BASE  
 TERRAM 1000 GEOTEXTILE  
 COMPACTED SUBGRADE (NON-FROST SUSCEPTIBLE)



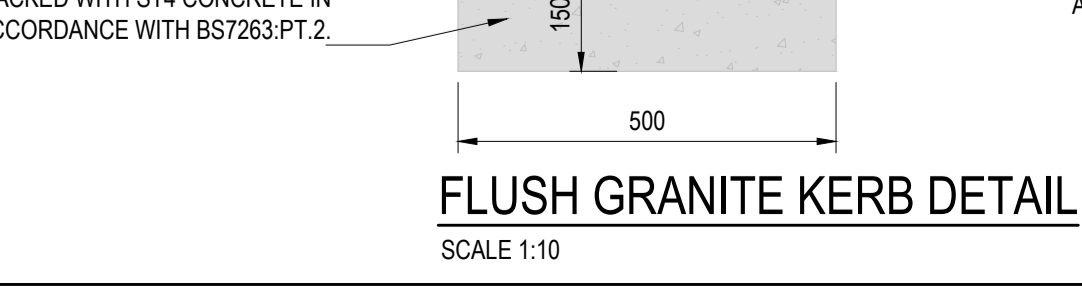
**SECTION THROUGH RAISED TABLE RAMP**  
 SCALE 1:20

A 500mm WIDE STRIP OF EXISTING SURFACE COURSE MUST BE PLANNED TO A DEPTH OF 50mm AND FILLED WITH DMB SURFACE 10mm AGGREGATE 40/60 PEN BINDER



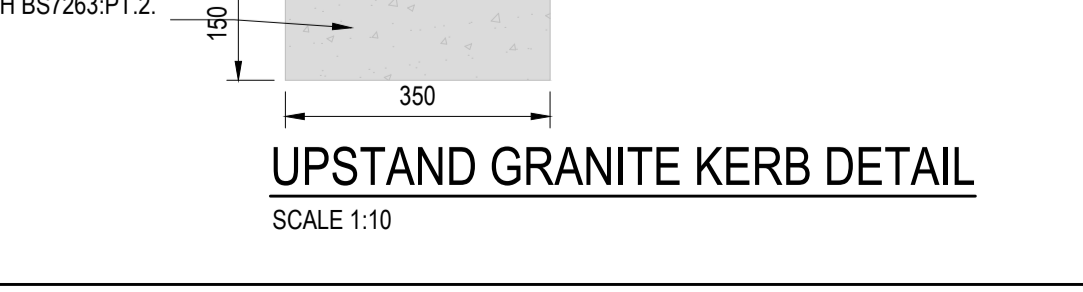
**OVER-BREAK REINSTATEMENT DETAIL**  
 SCALE 1:20

FLUSH GRANITE CHANNEL KERB 200x300 TO BS EN 1340 ON A MIN. 150mm THICK CONCRETE BED AND HAUNCH ST4 MIX (0-6mm KERB FACE).  
 KERBS ARE TO BE BED AND BACKED WITH ST4 CONCRETE IN ACCORDANCE WITH BS7263:PT.2.



**FLUSH GRANITE KERB DETAIL**  
 SCALE 1:10

GRANITE KERB 200x300mm TO BS EN 1340 ON A MIN. 150mm THICK CONCRETE BED AND HAUNCH ST4 MIX (50mm KERB FACE).  
 KERBS ARE TO BE BED AND BACKED WITH ST4 CONCRETE IN ACCORDANCE WITH BS7263:PT.2.



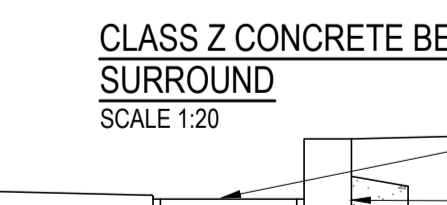
**UPSTAND GRANITE KERB DETAIL**  
 SCALE 1:10

MINIMUM TRENCH WIDTH  
 PIPES UP TO 1000 BC+200  
 PIPES UP TO 6000 BC+300  
 PIPES EXCEEDING 6000 BC+450  
 MAXIMUM TRENCH WIDTH SEE SPECIFICATION

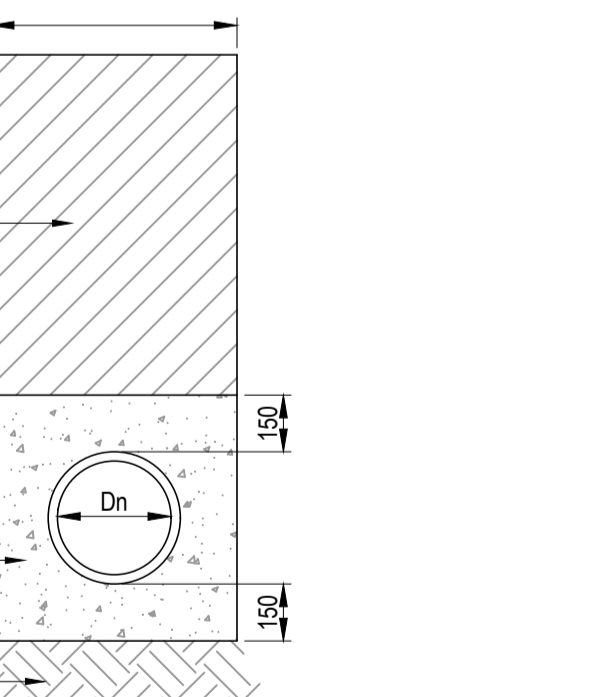
HARDSTANDING AREAS  
 DETR TYPE 1 GRANULAR MATERIAL  
 SOFT LANDSCAPE AREAS  
 SELECTED BACKFILL MATERIAL UP TO UNDERSIDE OF TOP-SOIL

THE FLEXIBLE JOINTS IN THE PIPES SHALL BE MAINTAINED AT THE END OF EACH PIPE WITH COMPRESSIBLE SHEET CUT ACCURATELY TO FIT THE PIPE PROFILE TO BREAK THE CONCRETE SURROUND

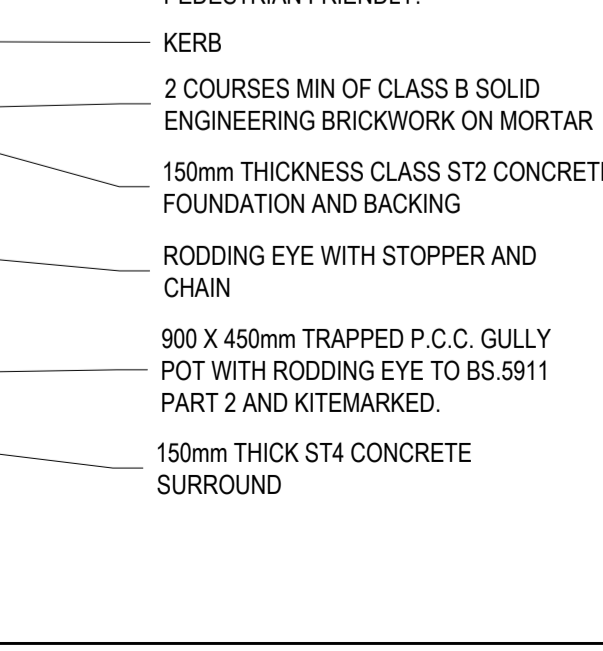
C20 CONCRETE  
 ANY SOFT SPOTS IN THE TRENCH FORMATION SHALL BE REPLACED BY AN ADDITIONAL DEPTH OF GRANULAR BEDDING UNLESS INSTRUCTED OTHERWISE BY THE ENGINEER.



**TYPICAL ESTATE ROAD GULLY**  
 SCALE 1:20



**DEMARCATION STUD**  
 SCALE 1:20



**CLASS Z CONCRETE BED AND SURROUND**  
 SCALE 1:20